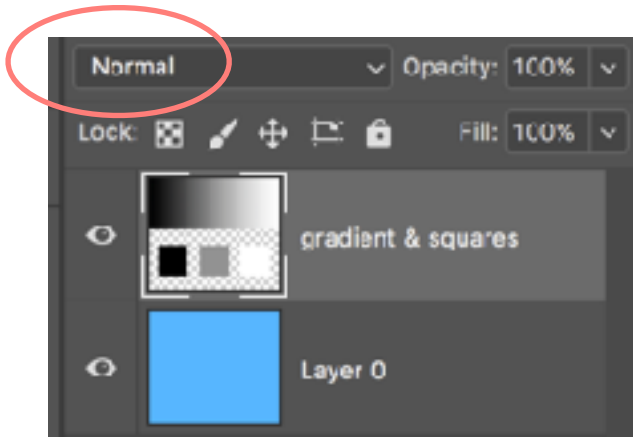


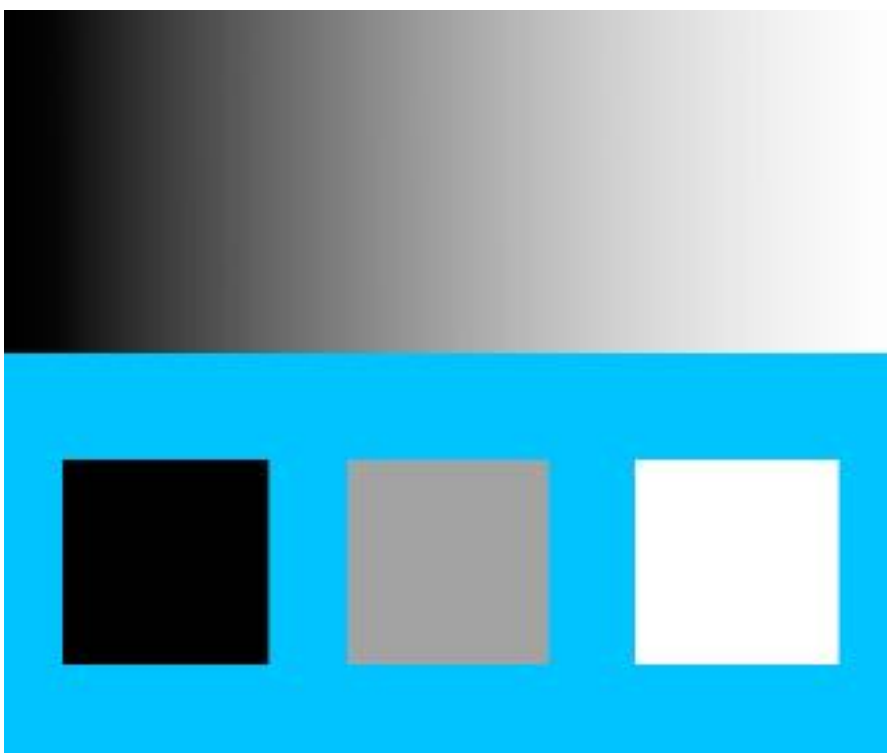
# Multiply Blending Mode

## Explanation of How it Works

<http://www.photoshopessentials.com/photo-editing/layer-blend-modes/multiply/>



1. See diagram above. On the bottom Layer 0 we have a solid blue colour, and on the layer above it, a gradient going from pure black on the left to pure white on the right, along with a black square, a white square and a square filled with 50% grey. The top layer named, Gradient & Squares is currently set to Normal blend mode, which means we're seeing everything exactly as we'd normally expect. The gradient and squares are completely blocking the solid blue colour underneath them. See diagram below.

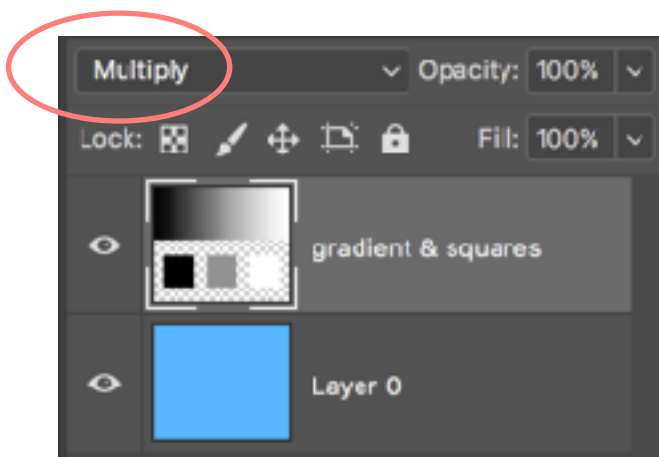


# Multiply Blending Mode

## Explanation of How it Works

<http://www.photoshopessentials.com/photo-editing/layer-blend-modes/multiply/>

2. What happens when the Normal Blend Mode is changed to **Multiply**.



3. With **Multiply** Blend Mode anything on the layer that is pure black will remain black. Anything that is pure white will completely disappear from view and any shade of grey between pure black and pure white will become darker. The 50% grey square and the rest of the gradient are blending in with the blue colour on the Layer 0 below them, giving a **darker** result.

# Multiply Blending Mode

## Explanation of How it Works

<http://www.photoshopessentials.com/photo-editing/layer-blend-modes/multiply/>

